

# EDIKIO PRICE TAG ACCESS

## THE AFFORDABLE SOLUTION TO PRINT YOUR PRICE TAGS ON CARDS

Edikio Price Tag Access is an all-in-one solution to print great-looking price tags on cards. It is ideal for printing monochrome, single-sided tags in low volumes.

Made for beginner-level users, Edikio Price Tag Access includes everything needed to update and print price tags in a few minutes:



## SOFTWARE FOR BEGINNERS

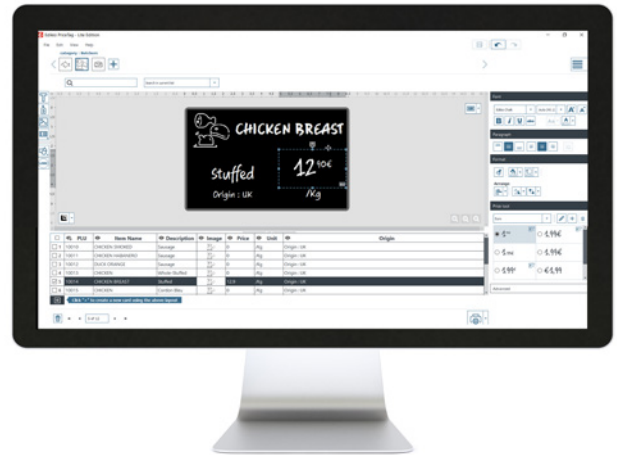
Thanks to the Edikio Price Tag Access solution, you benefit from the simple functionality of the Edikio Price Tag software "Lite edition" compatible with Windows® and macOS.

Create price tags in a **user friendly interface** with:

- An All-in-one view to have access to your card design and your list of items at a glance
- A wide range of images, pre-designed templates and sample database lists dedicated to your needs
- The exclusive Edikio Chalk font
- Tag holder footprint to visualize the mark of your tag holder on your card design
- A graphical wizard to import data from Excel files

It also contains **simple and useful features** like:

- Automatic detection of the updated prices since the last print
- Automatic refresh from an external database
- An easy tool to select price formats and currencies
- Backup & Restore function to save easily all your data
- Search toolbar with highlighted results
- An allergen tool to automate their display directly on your tags.
- Scoring tool to add, on your tag, a notation in the form of stars or circles.



**Ideal for small retailers, such as:**

Bakers, Butchers,  
 Pastry chefs, Chocolate  
 sellers, Cheesemongers,  
 Fishmongers, Caterers,  
 Wine merchants...

\* Detailed information and list of references available at [www.edikio.com/food-contact-compliance](http://www.edikio.com/food-contact-compliance)

# SPECIFICATIONS

Product reference no.	EA2U0000BS-BS001
Printer	Edikio Access Single-sided, monochrome near-to-edge printing (margin 1.4 mm)
Software included	Edikio Price Tag software - LITE edition Available in 13 languages: Czech, Danish, German, Chinese (simplified), Dutch, English, French, Italian, Japanese, Norwegian, Polish, Portuguese, Spanish including drivers for macOS and Windows® (Edikio Printer Suite)
Compatible cards	PVC cards Paper cards PLA/Wood cards
Compatible format	Credit-card format ISO CR80 - ISO 7810: 85.60 x 53.98 mm (3.37" x 2.13")
Card thickness	0.5 mm - 0.76 mm (20 mil - 30 mil)
Print ribbon management	Automatic ribbon identification and installation Visual notification when running low/end of ribbon (Windows®)
Printing technology	Monochrome thermal transfer, print head 300 dpi
Printing speeds	WHITE monochrome: 240 cards / hour (15 sec / printed tag) BLACK monochrome: 265 cards / hour (14 sec / printed tag)
Capacity of card container/loader	Up to 25 cards/Up to 25 cards (thickness 0.76 mm / 0.02")
Dimensions (H x W x D)/Printer weight	277 mm x 201 mm x 151 mm / 1,66 kg (3.66lb)
Min/max operating temperature:	15°C / 30°C (59°F / 86°F)
Connectivity	USB (1.0, 1.1, 2.0, 3.0)
Box contents	1 x Edikio Access printer 1 x Edikio Price Tag Software Suite – USB stick USB cable (1.80 m) 100 x CR80 black PVC cards 30 mil 1 x monochrome white ribbon for 500 prints Power supply and power cord
Warranty	2 years, optional warranty extension to 4 years available
Minimum system requirements	Windows® 11, 10, 8.1 (32 / 64 bit) or Mac OS from 10.14 and later versions • 2 GB of RAM • 2.5 GB of free hard disk space • Screen resolution: 1024 x 768 pixels • 1 USB port



[www.edikio.com](http://www.edikio.com)

## HQ | EUROPE – MIDDLE EAST – AFRICA

Evolis – 14 avenue de la Fontaine – ZI Angers-Beaucouzé – 49070 Beaucouzé – France  
T +33 (0) 241 367 606 – F +33 (0) 241 367 612 – [info@evolis.com](mailto:info@evolis.com)

**US & CANADA** - Boston - [evolisnortham@evolis.com](mailto:evolisnortham@evolis.com)

**LATIN AMERICA** - Miami - [evolislatam@evolis.com](mailto:evolislatam@evolis.com)

**ASIA-PACIFIC** - Singapore - [evolisasia@evolis.com](mailto:evolisasia@evolis.com)

**CHINA** - Shanghai - [evolischina@evolis.com](mailto:evolischina@evolis.com)

**INDIA** - Mumbai - [evolisindia@evolis.com](mailto:evolisindia@evolis.com)